



Water for Southern California:

“All of the Above Strategy”

**Kathleen Cole, Legislative Representative
The Metropolitan Water District of Southern California**

February 25, 2016

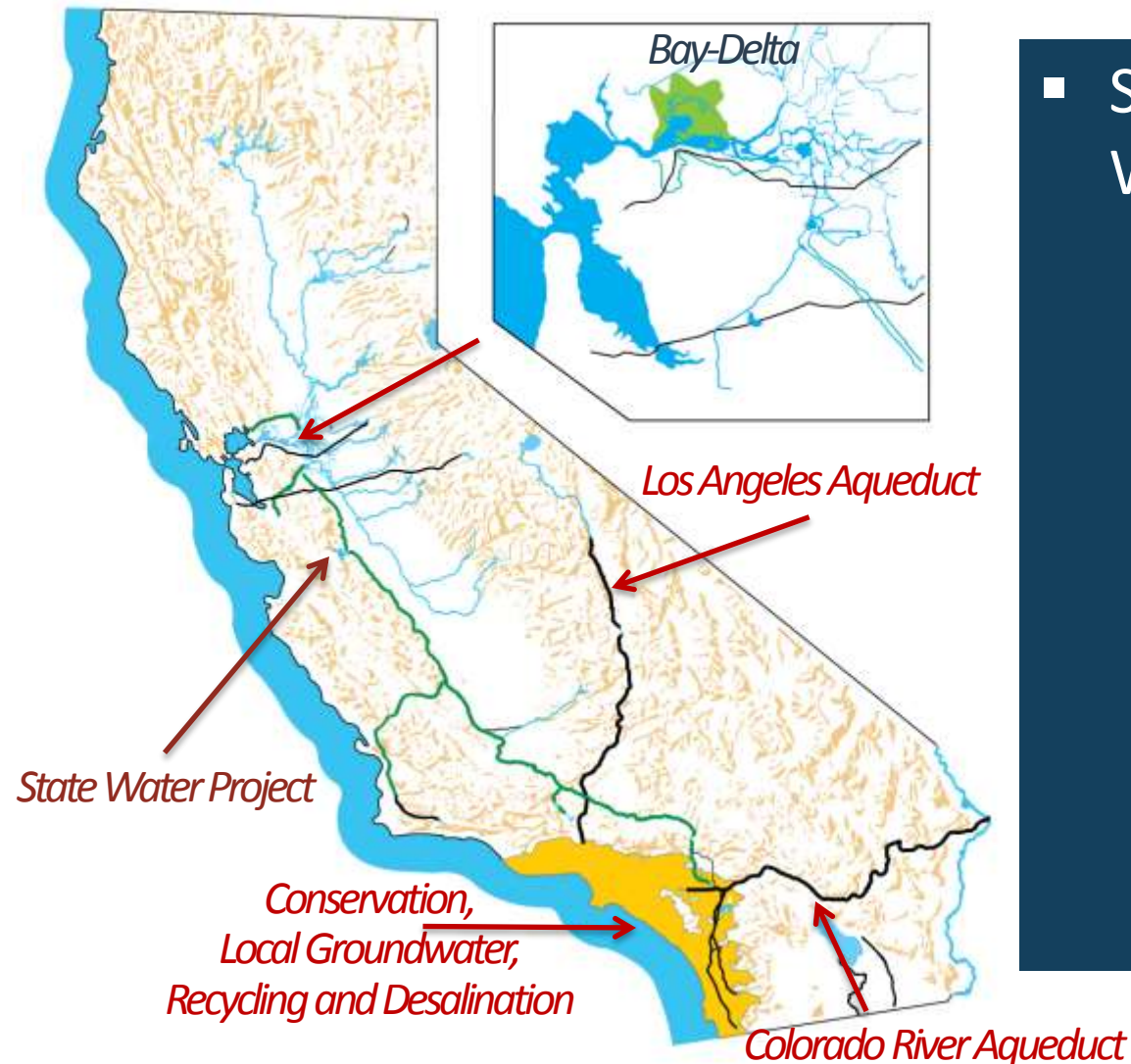
Metropolitan Water District



- **Regional water wholesaler**
- **26 Member Agencies**
- **6 counties**
- **Serving ~19 million residents**
- **5,200 square mile service area**
- **\$1 trillion economy**

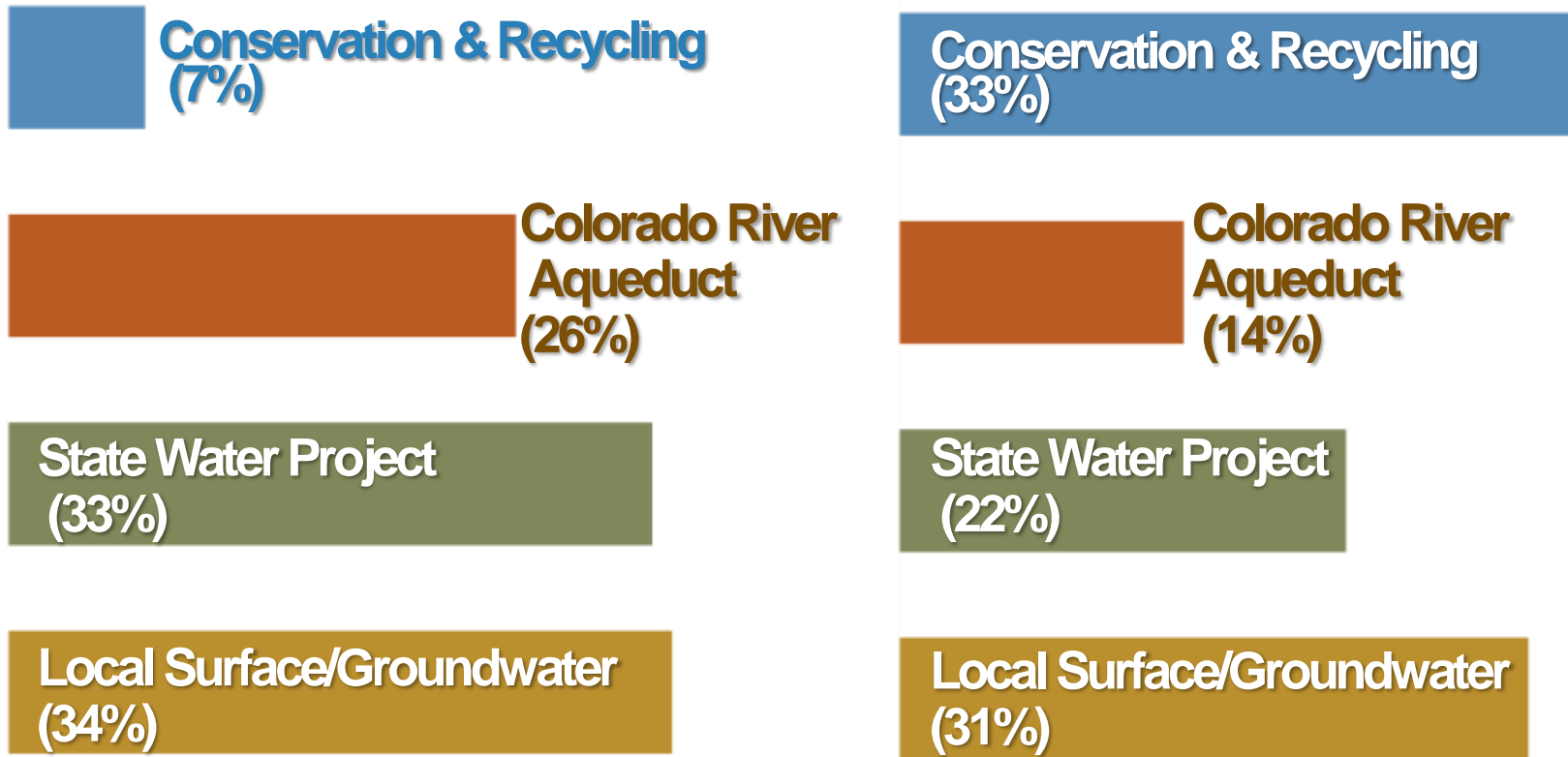
Metropolitan's Service Area

Diverse Water Supplies



- **Southern California Water Portfolio**
 - 25% Colorado River
 - 30% State Water Project (through the Delta)
 - 45% Local Supplies
 - Los Angeles Aqueduct
 - Conservation
 - Groundwater
 - Recycling
 - Desalination

MWD Water Resource Strategy Supply/Demand Management–1990 vs. 2035

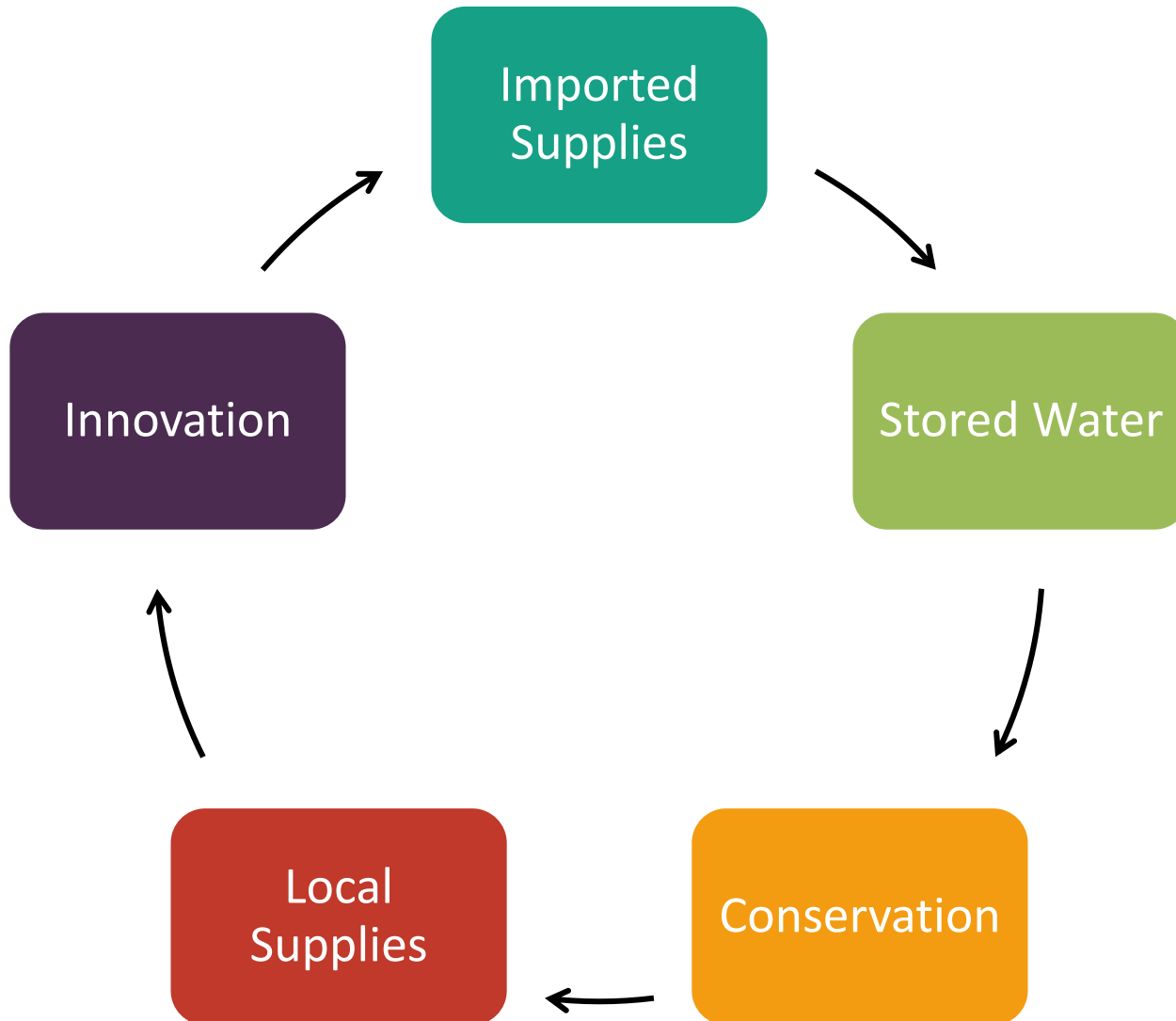


1990 – 41% Local
Heavy dependence on imported supplies

2035 – 64% Local
Emphasis on conservation, recycling, desalination and local supplies

Southern California's Resource Portfolio

An "All of the Above" Strategy for Reliability



Supply and Demand Management



Recycling



Groundwater Recharge



Desalination



Colorado River

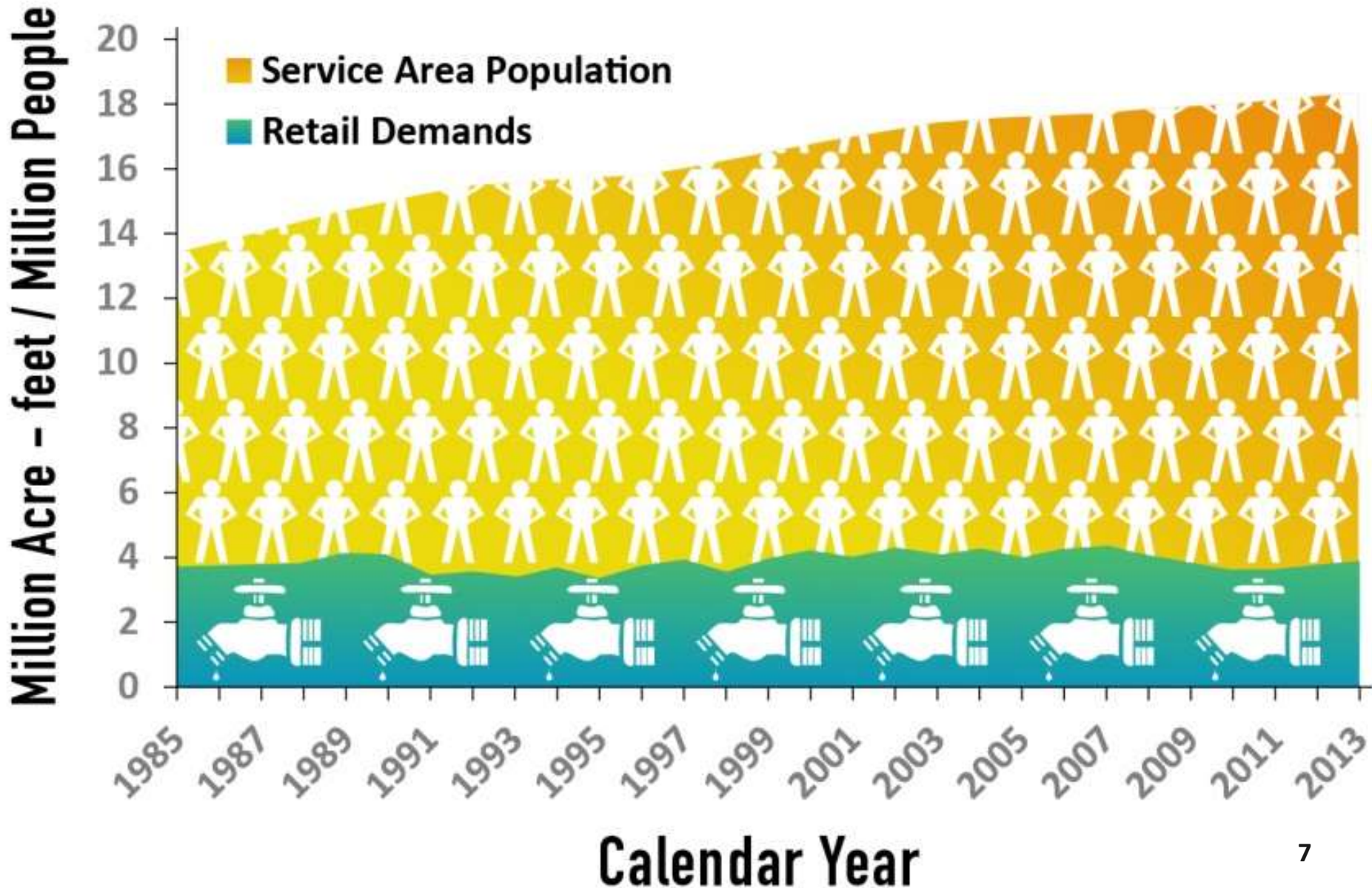


State Water Project



Conservation

Serving a Growing Population with Same Demand



State Water Project Essential Baseline

- Drought preparedness
- Southern California's local supplies depend on water quality benefits of SWP water:
 - Blending impaired supplies
 - Maximizing recycled water opportunities
 - Groundwater replenishment and recovery
 - Water quality and salinity management

Diamond Valley Lake
(100% SWP Water)



Chronic Impacts and Long-Term Risks

State Water Project Supplies

- **Chronic Impacts**
 - Fisheries conflict
 - Pumping restrictions
 - Non-native species
 - Ag/Urban discharge
 - Food web impacts
- **Long-Term Risks**
 - Seismic
 - Sea-level rise
 - Subsidence



Modernizing the State Water Project



- Take action on longstanding issues
- Improve and modernize state water delivery system
- Meet environment and economic needs
- Adapt to current and future climate change impacts

State's April 2015 Proposal



- Protects State's water supplies through Delta system upgrades
- Mitigation
- Water contractor funded
- Dual tunnel facilities and mitigation



- Supports long-term health of native fish & wildlife
- Habitat restoration
 - ~ 30,000 acres in 5 years
- Includes broader public funding



Kathleen Cole
kcole@mwdh2o.com



mwdh2o.com
Bewaterwise.com